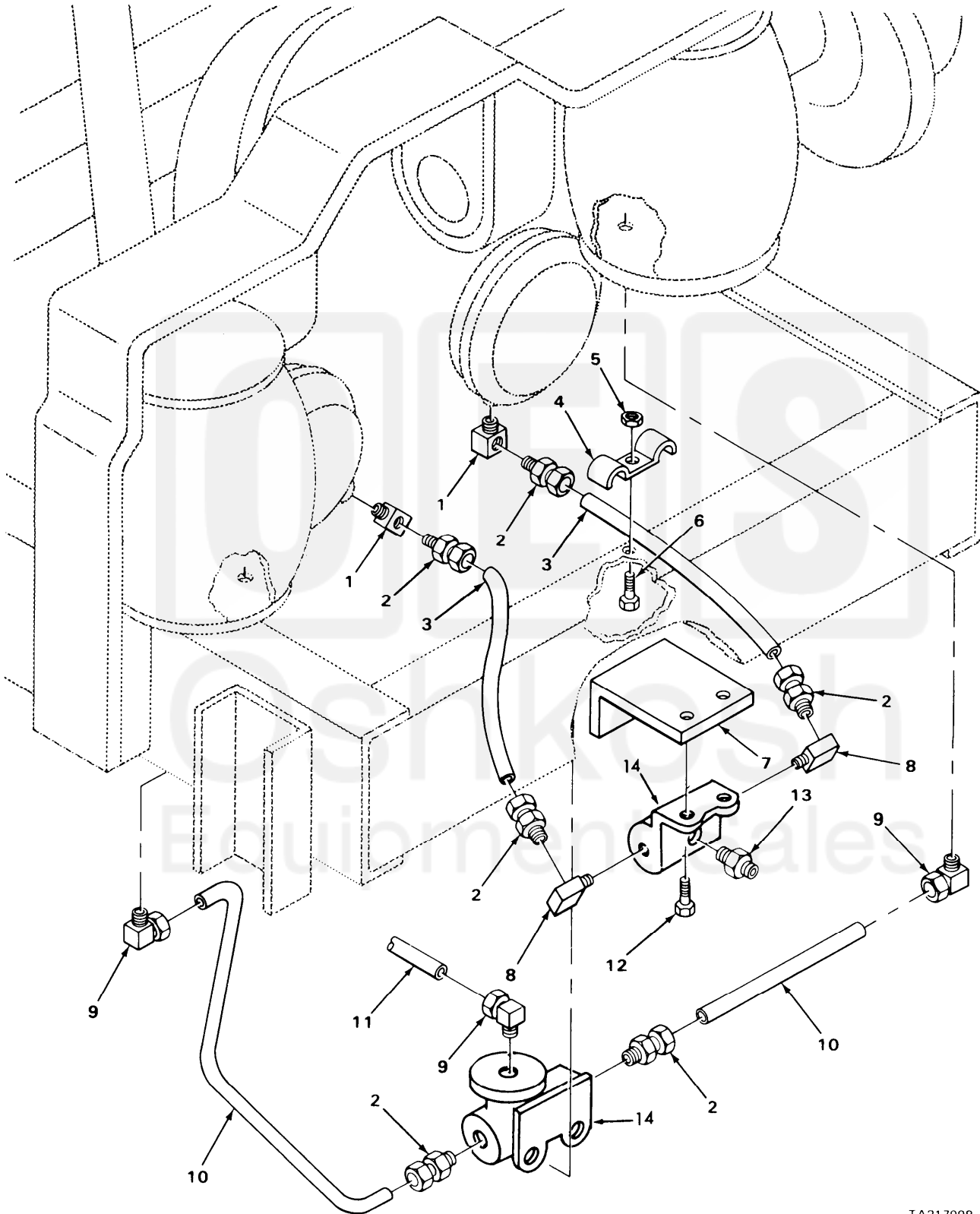


SECTION II

TM9-2320-273-24P



TA217098

FIGURE 176. AIR BRAKE CHAMBER LINES AND FITTINGS (MODELS M917, M919 AND M920).

Current part is item (1) on diagram. Available at www.oshkoshequipment.com

SECTION II (1)	ITEM (2)	(3)	TM9-2320-273-24P (4)	(5)	(6)
NO	SMR CODE	FSCM	PART NUMBER	DESCRIPTION AND USABLE ON CODE (UOC)	QTY
GROUP:1208 AIR BRAKE SYSTEM					
FIGURE 176. AIR BRAKE CHAMBER LINES AND FITTINGS (MODELS M917, M919 AND M920).					
1	PAOZZ	88044	AN915-3	ELBOW UOC:U23,U25,U26	2
2	PAOZZ	93061	68NTA-8-6	ADAPTER, STRAIGHT, PI UOC:U23,U25,U26	6
3	PAOZZ	34623	M/145-20021	HOSE ASSEMBLY, NONME UOC:U23,U25,U26	2
4	PAOZZ	75272	COV-1311	CLAMP, LOOP UOC:U23,U25,U26	1
5	PAOZZ	96906	MS51967-5	NUT, PLAIN, HEXAGON UOC:U23,U25,U26	1
6	PAOZZ	96906	MS90728-32	BOLT, MACHINE UOC:U23,U25,U26	1
7	PBOZZ	34623	MB10-20109	BRACKET, ANGLE UOC:U23,U25,U26	1
8	PAOZZ	03924	1024-8-8B	ELBOW UOC:U23,U25,U26	2
9	PAOZZ	10988	222-2645	ELBOW UOC:U21,U25,U26	3
10	MOOZZ	34623	M/357-20092	TUBE, NONMETALLIC MAKE FROM P/N 246115 UOC:U23,U25,U26	2
11	MOOZZ	34623	M/357-20100	TUBE, NONMETALLIC MAKE FROM P/N CPR104420-1 UOC:U23,U25,U26	1
12	PAOZZ	24617	9419032	BOLT, MACHINE UOC:U23,U25,U26	2
13	PAOZZ	79470	1468X10X6	ADAPTER, STRAIGHT, PI UOC:U23,U25,U26	1
14	PAOZZ	57005	1032	VALVE, AIRBAG PRESSU UOC:U23,U25,U26	1

END OF FIGURE



Current part is item (1) on diagram. Available at www.oshkoshequipment.com